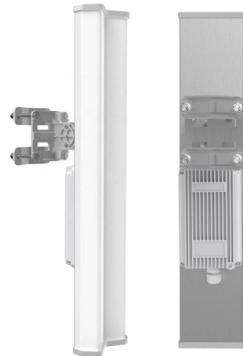


Do Swiss charging station cables need to be run through cable trays



Overview

Route cables along walls or use floor-mounted cable trays to keep them secure. IEC 61851 (International Electrotechnical Commission) is a global standard that defines the general requirements for conductive charging systems for electric vehicles. It sets guidelines for EV charging systems, including charging modes, cable requirements, and connector specifications. Scope: Can anyone advise what the latest building regulations in Switzerland says (if anything); about requirements for builders to provide power supplies to parking points, to allow a charger to be connected in new build properties ?

I am sure it's optional & potentially a very expensive option based. Behind every reliable high-power EV charging station lies a robust electrical conduit system., moisture, UV radiation. If suitable, use the existing buried SWA cable, connect to T&E in the house and run inside the house either externally in trunking or behind the dot and dab plasterboard on the left hand wall. (Bottom wall on the diagram) Most of the run is covered by kitchen units or in the living room at the. Avoid sharp bends in the cable to prevent internal damage. Control & Safety Layer (IEC 61851): Defines the methodology for safely.

Article Content

What are the cable management requirements for EV charger

To ensure proper cable management, utilize cable conduits to protect wires, avoid sharp bends, and route cables along walls or use floor-mounted trays. Regular inspections for wear and

E-Mobilität zuhause & unterwegs einfach laden

Für das beste Ladeerlebnis der Schweiz: Swisscharge realisiert professionelle Ladelösungen und bringt die E-Mobilität täglich voran – mit dem zuverlässigsten

Refueling and Charging Switzerland | Europamaut

To drive on highways and expressways, you need a vignette in Switzerland, which can be purchased online or at sales points near the border. Refueling and Charging in Switzerland:

Electric car charging stations in Switzerland | Clyde

Many drivers still have doubts about the charging infrastructure for electric cars. Keep reading to find out whether Switzerland really has enough

New Building Regs and Electric Car Charging

Can anyone advise what the latest building regulations in Switzerland says (if anything); about requirements for builders to provide power supplies to parking points, to allow a charger to be

A Guide to EV Charging Cables and Charger Plugs

The cables must be permanently attached to the charging station and are frequently liquid-cooled to handle the heat because this method of charging sends much more power straight to

EV Charging Station Installation: Key Requirements & Tips

Before installing an EV charging station, a thorough site assessment is essential. This step ensures that the location is suitable for the installation and can support the necessary infrastructure.

Wiring for EV Infrastructure: What You Need to Know

Electric vehicle charging stations require robust wiring to handle the high current and voltage necessary to charge EVs efficiently. Depending on the type of charging station (Level 1,

Overview of public charging stations for electric cars | AMAG

Charging stations for electric cars: Where, how long, how expensive? Here you can find all the information and an overview of the public charging stations.

What plugs do Swiss border towns use? : r/askswitzerland

Why do Switzerland and Liechtenstein even have their own plug type to begin with? So, what types of IEC World Plugs exactly do border towns in Switzerland and the city-nation of Liechtenstein use, as

Cable routing options for new EV charger. What would...

Underground cables should either be laid directly in the ground or, preferably, in plastic ducting (not steel). Ducting needs to be sized to be able to pull a relatively inflexible run of 6mm²

Travel Adaptor for Switzerland | Electrical Safety First

If the frequency is different, the normal operation of an electrical appliance may also be affected. For example, a 50Hz clock may run faster on a 60Hz electricity

Charging and refueling

The network of charging stations is continuously expanding, making charging electric cars in Switzerland increasingly easy. You will find charging stations mainly in cities, along highways,

Switzerland's evolving electric vehicle charging landscape

Through cross-border collaboration under EU-backed programs, Switzerland remains integrated into the broader European EV ecosystem despite its non-EU member status. Towards a sustainable future

Swiss electricity, power outlets and adapter plugs

Swiss electricity, power outlets and adapter plugs Voltage in Switzerland is 230 V. In most cases you need an adapter to plug your equipment in Swiss outlets.

Electric vehicle charging cables: the complete guide

Unplug the confusion! get the ultimate guide to EV charging cables. compare types, find the best fit, & master the charging process. expert advice you won't find anywhere else.

directory-list-2.4.txt/directory-list-2.4.txt at main

Customer stories Events & webinars Ebooks & reports Business insights GitHub Skills ...

Do EU plugs work in Switzerland? What's the

The Swiss power outlets are similar to outlets in other countries, but designed for 4mm prongs. The 4.8mm prongs as used in Germany or France do not fit, but

EV Charging Inlet Standards: Global Compliance Guide 2024

These standards cover things like what voltages are allowed, how many pins need to be in place, and even how the car and charger talk to each other so electricity can flow safely and

Official Guide to European EV Charging Standards and Protocols

Discover the EV charging industry standards and protocols which deliver the flexibility that is needed for the European electric vehicle market.

Power plugs in Switzerland: the simple guide for travellers

In plain terms, most modern two pin European chargers will work in Switzerland, but the larger German Schuko plugs and some French

Cross-pavement solutions for charging electric vehicles

Permanent under pavement cables Solutions where a permanent charging cable is laid below the pavement, connecting the domestic chargepoint via removeable bollards, a lance, or other

Power Outlets on Swiss Trains & Trams

Find out where the power outlets are on Swiss trains and trams so you can work or charge without stress while traveling.

Understanding Global Standards for EV Charging Station Conduits

Ensure safety and performance for EV charging. This guide explains global standards for conduits, helping you choose the right system for code compliance.

EV Chargepoint Installation – Top 10 Tips | TLC Electrical

Cables used must be suitable for the environment in which they are installed. Any hole used or made to pass a cable through a wall must be sealed properly to maintain the integrity of the building structure.

EV Charging Stations Conduit Requirements for High-Power Installations

High-power conduits in EV charging stations must be protected against the elements; therefore, weatherproofing measures such as UV-resistant coatings and sealed joints are

New Building Regs and Electric Car Charging

Yes. I was more concerned about the cabling infrastructure rather than a charging wall box. And the aspects of regulations by the authorities requiring this provision from builders, given

Legal Aspects of Electric Vehicle Charging Stations

1. In the case of co-ownership, the installation of electric vehicle charging stations (still) requires a qualified majority decision, but not unanimity.

IEC 61851 Explained: EV Charging Modes & Safety Guide

Explore IEC 61851 EV charging standard, covering charging modes, safety requirements, connectors, and how it ensures global compatibility for

Electricity

Public Holidays Certain public holidays are celebrated throughout Switzerland – such as Easter, Christmas, New Year and Swiss National Day on 1 August . Other public holidays vary from canton

Contact Us

For more information, pricing, or custom solutions, please contact us:

Website: <https://kwsaevents.co.za>

Email: sales@kwsaevents.co.za

Phone: +27 21 852 4719

Address: 25 Riebeeck Street, Cape Town, 8001, South Africa

This document is for informational purposes only. Specifications subject to change without notice.

