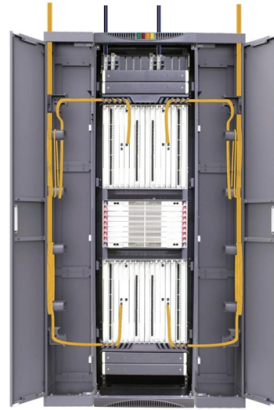


Ftth Drop cable laying length



Overview

The cable is laid out in a figure 8 configuration on the ground. This pattern is quite huge, measuring at least 10-20 feet from top to bottom. However, it has several limitations. Upgrades require excavation or access to aerial infrastructure, specialized equipment, and can lead to potential signal degradation. The effective lifetime of the optical fiber may be less than. Q: What is the minimum bending radius of FTTH drop cable?

A: Generally, the cable shall be bent no less than 20 times the diameter for installation and 10 times for static use. In most FTTH architectures — whether. The length of the FTTH Drop Patch Cord is a critical factor that affects both the installation process and the long-term performance of fiber optic networks in residential environments. A patch cord that is too short risks putting undue tension on fiber connectors and cables, which can lead to. The GPON designers were clever, however, making 10G use different wavelengths than 1G, so if you build a 1G GPON network, you can upgrade at any time - say to accommodate a network expansion aimed at businesses - and run both networks simultaneously over the same cable plant.



Article Content

Drop Cable and Its Termination in FTTH

Drop Cable and Its Termination in FTTH FTTH (fiber to the home) networks are installed in many areas covering indoor section, outdoor section, as well as the transition in between. To fulfill

FTTH Drop Cable: Types, Specifications & Installation Guide | Opelink

This comprehensive guide explores FTTH Drop Cable, covering technical specifications, deployment scenarios, and best practices to help you optimize your fiber infrastructure for maximum

Fiber Optic Drop Cable and FTTH Termination

FTTH drop cables, as previously mentioned, are located on the subscriber end to connect the terminal of a distribution cable to a subscriber's premises. They are

Fiber To The Home Network Design

Choosing splitter locations can be challenging, but generally it is done where one finds groups of subscribers in close proximity so the length of drop cables is

What is optical fiber drop cable?

Looking for high-quality fiber drop cables for FTTH? Zion Communication is a trusted Chinese manufacturer offering OEM/ODM service,

Fiber to the Home (FTTH) Drop Cable: Your Guide to

FTTH drop cables are the linchpin of high-speed, reliable internet connectivity, enabling homes and businesses to thrive in the digital age. From duct and direct

FTTH Construction Guidelines Document | PDF | Fiber

This document provides guidelines for constructing and implementing fiber-to-the-home (FTTH) networks in access networks. It outlines procedures for trenching,

Optical Fiber Drop Cable Explained: Type, Application & FTTH

Discover optical fiber drop cables for FTTH networks: types (indoor/outdoor, figure-8, duct), applications in homes/enterprises, and key features like LSZH sheaths & FRP reinforcement.

FTTH Drop Cable: Types, Specifications & Installation Guide | Opelink

Complete FTTH drop cable guide: flat vs round, aerial vs underground, G.657.A2 specifications, SC/APC connectors. Installation tips for last-mile fiber to the home.

Drop Cables | Optical Communications | Corning

Designed to deliver high-speed data, voice, and video services directly to subscribers, drop cables ensure reliable, high-performance connectivity in fiber

Fiber Optic Drop Cable Guide

The drop optical cable constitutes the optical cable line from the user access point to the terminal, which is crucial to the FTTH network.

Pre-Terminated FTTH Drop Cable Assembly Guide

Learn how to install pre-terminated FTTH drop cable assemblies quickly and efficiently. Explore benefits, applications, and expert tips for reliable fiber deployments.

cable drop installation

Cable Drop Installation: Best Practices and Considerations for Seamless Connectivity
Cable drop installation is a critical process in

FTTH Drop Cable Installation: 30 Common Questions

Get expert answers to 30 common questions about FTTH drop cable installation, including cable routing, tension, bending radius, SC/APC connector

Fiber Drop Cable Installation: What Installers and Users

This cable connects the main fiber line to each house or building. A proper fiber drop cable installation is necessary to make sure the internet

How far can you run fiber drop cable?

In this article, we will explore the maximum distance limitations for running fiber drop cables, factors affecting distance, and considerations for

FTTH Fiber Optic Drop Cables: Challenges and

Introduction Fiber to the Home (FTTH) is a transformative solution, delivering ultra-fast internet access directly to end-users. The fiber optic drop

FTTH Drop Patch Cord Length Guide for Home

Select the ideal FTTH Drop Patch Cord length for home networks to avoid signal loss, maintain durability, and simplify cable management.

Fiber Drop Cable Best Practices For FTTH: Selection

Learn best practices for FTTH fiber drop cable selection and installation. Compare cable types, routing methods, and how Quick ODN

FTTH Networks and Drop Fiber Optic Cable:

Conclusion In summary, drop fiber optic cable is an essential component of the FTTH network. It serves as the final external link between the subscriber and

How To Choose The Right FTTH Drop Cable?

FTTH drop cables, as previously mentioned, are located on the subscriber end to connect the terminal of a distribution cable to a subscriber's

Fiber Drop Cable Installation Guide

This blog introduces installation methods of fiber drop cables for FTTH projects. With a focus on achieving efficient and effective FTTH deployment, Fibconet provide you with insights on utilizing

Choosing the Right FTTH Drop Cable: A Guide for

FTTH drop cables are specifically designed for connecting fiber optic networks to residential and commercial buildings. These cables typically consist

FTTH Drop Cable Technical Q& A

Get answers to 26 technical questions about FTTH drop cables, covering fiber types, cable construction, mechanical and environmental

Contact Us

For more information, pricing, or custom solutions, please contact us:

Website: <https://kwsaevents.co.za>

Email: sales@kwsaevents.co.za

Phone: +27 21 852 4719

Address: 25 Riebeek Street, Cape Town, 8001, South Africa

This document is for informational purposes only. Specifications subject to change without notice.

