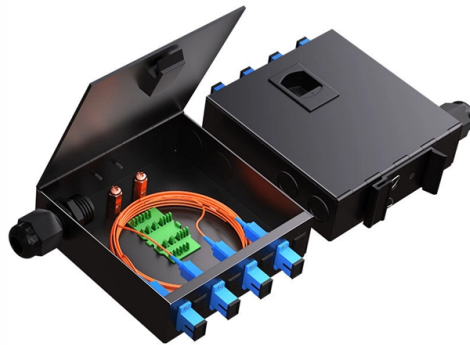


# Gigabit Single-Mode Fiber Transceiver Wavelength



## Overview

Various Wavelength Options: With support for multiple wavelengths, including 1310nm and 1550nm, these transceivers are suitable for different distance needs and specific network requirements. The 1000BASE-T SFP operates on standard Category 5 unshielded twisted-pair copper cabling of link lengths up to 100 m (328 ft). Cisco 1000BASE-T SFP modules support 10/100/1000 auto negotiation and Auto MDI/MDIX. It is defined by the Institute of Electrical and Electronics Engineers (IEEE) as 802. As a critical Ethernet physical layer standard, they specify a set of. The 1000BASELX SM SFP 80KM is a Gigabit single-mode SFP (mini-GBIC) transceiver with an LC style connector. With a TX power of -2dBm (min) and. Gigabit Ethernet 1000BASE-ZX and Fiber Channel 1x SM-LC-L FC-PI. The LX standard is one of the most popular for short and medium range fiber connections due to increasingly popular single-mode fiber plant. Media (fiber vs copper), wavelength, reach, connector, temperature grade, and even application domain (Ethernet, SONET/SDH, PON, Fibre Channel) all matter.

## Article Content

100BASE FX SFP: Complete Guide to 100Mbps Fiber Transceivers

100BASE FX SFP remains a widely used solution for deploying 100Mbps fiber connectivity in industrial, enterprise, and legacy Fast Ethernet networks. While Gigabit and higher-speed optics dominate

Gigabit Switch Commercial Grade Ring Network 2 Optical 6 Electrical ...

Gigabit Switch Commercial Grade Ring Network 2 Optical 6 Electrical Fiber Optic Transceiver Redundant Self-Healing Management

NETSCOUT Transceiver, SFP+, 10GBase-LR, 321-1487 | Cendirect

NETSCOUT Transceiver, SFP+, 10GBase-LR, SM, LC - For Data Networking, Optical Network - 1 x LC 10GBase-LR Network - Optical Fiber - 1310 nm Wavelength - Single-mode - 10 Gigabit Ethernet -

5 Pairs 1.25G BIDI SFP Network Transceiver Module, 1.25 Gigabit Single ...

The fiber module also works well with switch, router, media converter and more gigabit SFP optic ports. 1000Base-offerl SFP: 5 Pairs Gigabit Single Mode SFP offeri Transceiver, SMF, Single LC

AOC, DAC, Fiber Optic Transceivers | One-Stop Shop

Online shopping. w/24h-delivery, 7Days & Refund Guarantee. CE, RoHS and ISO9001 Certified. SFP+ Cables, QSFP+ Cables, MiniSAS Cables, XFP Cables,

Cisco SFP Modules for Gigabit Ethernet Applications

This data sheet describes the benefits, specifications, and ordering information for the Cisco SFP Modules for Gigabit Ethernet Applications.

SFP Types Explained: 1G Modules, Distances & Selection

Use BiDi to halve fibers, CWDM/DWDM to scale wavelengths, and industrial-temp SKUs for outdoor/harsh sites. With these tables and the

1000BASE-ZX SFP 1550nm 80kmTransceiver Datasheet | FS

Gigabit Ethernet 1000BASE-ZX and Fiber Channel 1x SM-LC-L FC-PI. It is with the SFP 20-pin connector to allow hot plug capability. This module is designed for single mode fiber and operates at

Single Mode Dual SC Fiber Gigabit Fast Ethernet Media ...

Product list: 2x Singlemode Gigabit Dual SC Ethernet Media Converter, 2x DC Power Supply, 1x Product Manual. Dual SC single-mode fiber port for connections over distances of up to 18.6 miles

## Small-Form Factor Pluggable (SFP) and Stacking Accessories

This article provides technical data on Fiber Transceivers and stacking accessories compatible with Meraki devices.

### 1000BASE-SX, 1000BASE-LX, 1000BASE-ZX& BX SFP: A Simple

What Is 1000Base-Sx?What Is 1000Base-Lx?What Is 1000Base-Lh?What Is 1000Base-Ex?What Is 1000Base-Bx?What Is 1000Base-Zx?What Is 1000Base-Ezx?1000Base-Sx vs 1000Base-Lx SFP: What Is The difference?FAQsConclusion1000BASE-LX SFP is a gigabit Ethernet standard over fiber optics for long reach. It operates on single-mode fiber (SMF) or multimode fiber (MMF) with a long wavelength of 1270 to 1355 nanometers (typically 1310nm). The "LX" stands for long reach. 1000BASE-LX SFP supports 10km over single mode fiber. Some industry vendors also provide an extended di...See more on optcore HMS Networks

### SFP Transceiver - Singlemode Gigabit Fiber - 80km

The 1000BASELX SM SFP 80KM is a Gigabit single-mode SFP (mini-GBIC) transceiver with an LC style connector. Operating at a 1550nm wavelength (typically for 80km), it supports 1000BaseLX Ethernet

### 400G OSFP

OSFP 400G Eoptolink's EOLO-134HG-5H-MXX OSFP DR4, 4x100G Optical transceiver module are designed for use in 400 Gigabit links over 500m

### 10 Gigabit Optical Transceivers | SFP+ and XFP

Perle 10 Gigabit Optical Transceivers are interchangeable, compact media connectors and enable a single network device to connect to a wide variety of

### Linksys MGBLX1 Datasheet

MGBLX1 Linksys MGBLX1 1000BASE-LX SFP transceiver for single-mode fiber, 1310 nm wavelength, supports up to 10 km

### SFP Transceiver Optical Fiber Single-Mode LC 1000Base-BX

Fiber distance support up to 40 km Wavelength Division Multiplexing (WDM) technology uses a single fiber link to transmit data over separate wavelengths for transmission and reception Wavelengths:

### SFP-10G-ER40 Single Mode 10G 40km SFP Transceiver Module 10G

Product Summary SFP-10G-ER40 Single Mode 10G 40km SFP Transceiver Module 10G SFP+ 1550nm 40km Product Description SFP+ ER 40KM fiber optic transceiver is designed for use in 10-Gigabit

### Optic Modules Datasheet

Optic Modules Data Sheet ... SFP (form factor) = small form-factor pluggable  
transceiver SMF (media) = single-mode fiber-optic MMF (media) = multimode fiber-  
optic XFP (form factor) = 10-gigabit small

Cisco 100G QSFP28 Transceiver Modules - Network Warehouse

The 100 Gigabit Ethernet signal is carried over a single wavelength using onboard PAM4 modulation and FEC. QSFP-100G-DR-S interoperates with 400G transceivers that comply with IEEE 400GBASE

1000BASE-LX SFP: A Complete Guide for Gigabit Fiber Networks

Learn what a 1000BASE-LX SFP is, how it works, supported fiber types, transmission distance, and common applications in Gigabit Ethernet networks.

StarTech HP JD119B Compatible SFP Transceiver Module

StarTech HPE JD119B Compatible SFP Module - 1000BASE-LX - 1GbE Single Mode (SMF) Fiber Optic Transceiver - 1GE Gigabit Ethernet SFP - LC 10km - 1310nm - DDM HPE 5900, 12500, 5500

1 Gigabit Singlemode SFP Fiber Optic Transceivers

Our 1 Gigabit Singlemode SFP Transceivers offer high-performance, reliable connectivity for singlemode fiber optic networks. These transceivers are

Cisco SFP-10G-ZR SFP (mini-GBIC) Transceiver Module Gigabit

Elevate Your Network Is Reach And Reliability With The CISCO SFP-10G-ZR Sfp+ Transceiver Module, Designed For High-performance 10 Gigabit Ethernet Connectivity Over Long Distances. This Multi

TP-Link Omada Gigabit Single-Mode WDM Bi-Directional SFP Module

TP-LINK's TL-SM321B adopts the latest standard 1000Base-BX, transmission over a single strand of fiber, with one different wavelength going in each direction. You can extend the network distance up

1000Base-LX 20Km Single-Mode Gigabit SFP (SFP

Buy the SFP-7020-31, a 1000Base-LX single-mode Gigabit SFP transceiver with 1310nm wavelength, 20Km reach, LC connector, and digital diagnostics.

## Contact Us

For more information, pricing, or custom solutions, please contact us:

Website: <https://kwsaevents.co.za>

Email: [sales@kwsaevents.co.za](mailto:sales@kwsaevents.co.za)

Phone: +27 21 852 4719

Address: 25 Riebeeck Street, Cape Town, 8001, South Africa

This document is for informational purposes only. Specifications subject to change without notice.

