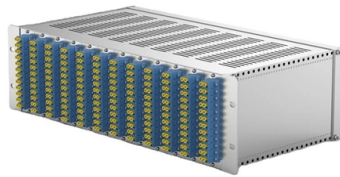


# Should explosion-proof distribution boxes be installed



## Overview

The lighting explosion-proof distribution box (board) should be installed securely, and the permissible deviation of the installation perpendicularity should not be more than 3 mm, and there should not be any gaps around the explosion-proof distribution box when it is. The lighting explosion-proof distribution box (board) should be installed securely, and the permissible deviation of the installation perpendicularity should not be more than 3 mm, and there should not be any gaps around the explosion-proof distribution box when it is. Explosion-proof distribution boxes are mainly used in coal mines, fire stations, petroleum, petrochemical installations and textile and other flammable and explosive places. These places are more prone to protection accidents. So in the choice of power distribution box to pay more attention to the. Unlike standard distribution boxes that could become shrapnel shards in volatile environments, explosion-proof containers are engineered fortresses that absorb, contain, and vent catastrophic blasts without becoming fragmentation bombs themselves. Combustible dust, volatile gases, and chemical. The distribution box should be installed in an area close to the power supply to reduce power loss and ensure safety. The path should avoid complex terrain and geological challenges, ensuring a more straightforward and economical layout.

## Article Content

Is the explosion-proof distribution box open or concealed ...

In summary, surface-mounted installation is generally recommended for explosion-proof distribution boxes. It's not only easy to install and maintain efficiently, but also effectively guarantees

How to Wire an Explosion-Proof Distribution Box and

Explosion-proof electrical equipment, such as explosion-proof distribution boxes, is specifically designed for hazardous environments where flammable gases,

Requirements And Specifications For Installation Of

The installation of explosion-proof distribution boxes should follow specific explosion-proof grades and material requirements to ensure their safety

Explosion Proof Enclosures for Hazardous Zones

Conclusion Industrial facilities use Explosion Proof Enclosures, IS cabinet boxes or other types of pressurized purged enclosures to ensure the safety of electrical

Inspection and Maintenance of Explosion-Proof Equipment

During the maintenance of explosion-proof junction box, check the proper fastening and tightening of high-tensile strength (HTS) bolts. If such bolt is missing, it should be replaced with

Top 3 Facts About Explosion Proof Distribution Box & Electrical

You should check explosion proof enclosures at least once a year. If the area is very risky, check more often to make sure seals, wires, and the box are still good.

Explosion-Proof Box: Essential Safety in Hazardous Areas

Learn what an explosion-proof box is, its types, certifications, applications, and how to choose the right one for safety in explosive environments.

The installation requirements for the distribution box

Learn how to install a distribution box safely and correctly. Covers wiring, placement, standards, and expert tips for a compliant setup.

Installation and Wiring of High and Low Voltage Explosion-Proof ...

Generally, professional electricians should handle the wiring of explosion-proof distribution boxes, as they possess the necessary skills and safety equipment. In non-urgent cases,

Key Material Requirements for Distribution Box

Learn the key material requirements for distribution box, Discover how the right materials ensure long-lasting performance and safety.

## 5 Key Factors to Consider When Selecting Explosion Proof Distribution Boxes

Selecting explosion-proof distribution boxes protects the safety of your staff in any potentially hazardous workplace. HEXLON stands out as a trusted provider of explosion-proof

### Requirements for electrical installations in Ex zones

The installation of explosion-proof equipment requires the use of suitable materials and techniques to ensure tightness and prevent the formation of sparks or

### Explosion-proof distribution box installation environment requirements

Whenever possible, the wiring for the **explosion-proof distribution box** should be installed in locations that are easily accessible for maintenance and future operations. This improves efficiency and

### Explosion proof distribution box standards and installation issues ...

Measures: In order to ensure safe use, lighting explosion-proof distribution boxes (boards) are required not to be made of flammable materials. Even in dry, dust-free places, wooden explosion-proof

### Explosion proof distribution box standards and installation issues ...

Explosion-proof distribution boxes are mainly used in coal mines, fire stations, petroleum, petrochemical installations and textile and other flammable and explosive places. These places are more prone to

### Explosion-Proof Distribution Boxes: Special Installation Requirements

Unlike standard distribution boxes that could become shrapnel shards in volatile environments, explosion-proof containers are engineered fortresses that absorb, contain, and vent

### Installation requirements for distribution boxes

Installation of closed or explosion-proof electrical facilities; distribution box electrical components, meters, switches and lines should be arranged neatly, firmly installed, easy to operate.

### Explosion-Proof Electrical Distribution Boxes: Applications in ...

In summary, explosion-proof electrical distribution boxes are essential for maintaining safety in hazardous environments. For instance, in an oil refinery where flammable vapors are prevalent, a

### Explosion Proof Enclosure Comprehensive Guide

Explosion-Proof Distribution box: These smaller components are structurally similar to distribution cabinets. You can use these for the distribution

What are the principles of connecting explosion proof distribution ...

5 steel pipe from the explosion-proof place to the open fire area or distribution room, should be installed on both sides of the partition wall isolation sealing box, and isolation sealing, so that the explosive

What Should Be Noted Before Installing Explosion

Always disconnect the power supply before carrying out any maintenance or inspection of the explosion-proof distribution box. It's important

Top 3 Facts About Explosion Proof Distribution Box & Electrical

Learn the top 3 facts about explosion proof distribution boxes & electrical enclosures—certifications (ATEX, IECEx, NEMA), durable materials, and customization for

Distribution box solutions for explosion-proof environments in ...

Explosion-proof distribution boxes represent where regulatory wisdom meets engineering excellence. What appears as simple protective enclosures are actually sophisticated safety systems honed

Explosion Proof Distribution Box: Glands vs Conduit for Safety

Choosing how cables enter an explosion-proof distribution box is one of those decisions that looks straightforward on paper but gets complicated fast once you factor in the actual site

## Contact Us

For more information, pricing, or custom solutions, please contact us:

Website: <https://kwsaevents.co.za>

Email: [sales@kwsaevents.co.za](mailto:sales@kwsaevents.co.za)

Phone: +27 21 852 4719

Address: 25 Riebeeck Street, Cape Town, 8001, South Africa

This document is for informational purposes only. Specifications subject to change without notice.

